



EIRICH

QualiMaster AT1

A **testing instrument** for
automatic monitoring and control
of clay-bonded **molding sands**

Compactability Springback
Shear strength Deformability
Gas permeability



FOUNDRY

Successfully used for decades.

The **EIRICH measuring and control system QualiMaster AT1** ensures consistently high quality of the molding sand.

EIRICH, the market leader in sand preparation, presents the new QualiMaster AT1

This **improved version** allows the **testing** of:

Compactability

Springback

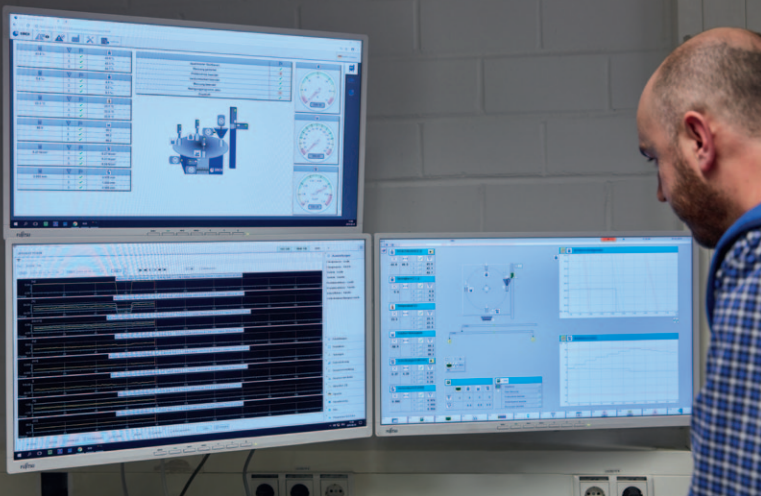
Shear strength

Deformability

Gas permeability

More features

- Up to 3 measurements per batch for each molding sand parameter
- Connection to existing control systems
- Stand-alone machine





In combination with the EIRICH software

SandReport

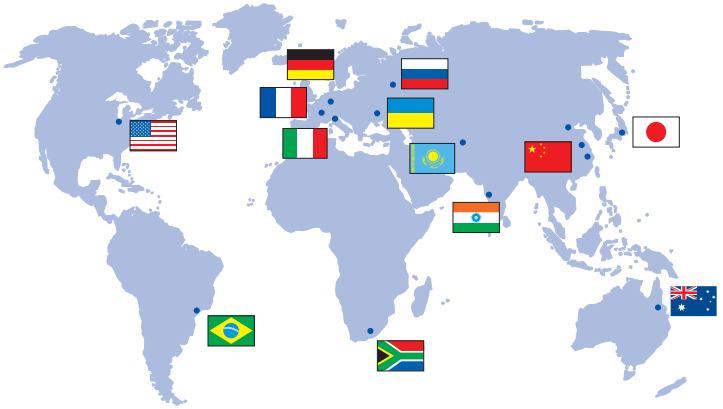
- Measured data acquisition
- Laboratory data entry
- Graphical evaluation
- Statistical evaluation

Additional features offered by the **SandExpert**

- Model catalogue (pattern plates)
- Recipe calculation
- Mold-related calculation of additives



EIRICH



For your local contact, please refer to:

www.eirich.com

Eirich Machines, Inc.

4033 Ryan Road · Gurnee, Illinois 60031

Phone: +1 847 3362444 · Fax: +1 847 3360914

www.eirichusa.com · eirich@eirichusa.com

Headquarters:

Maschinenfabrik Gustav Eirich GmbH & Co KG

74736 Hardheim · Walldürner Straße 50 · Germany

Phone: +49 6283 51 0 · www.eirich.com · eirich@eirich.de