

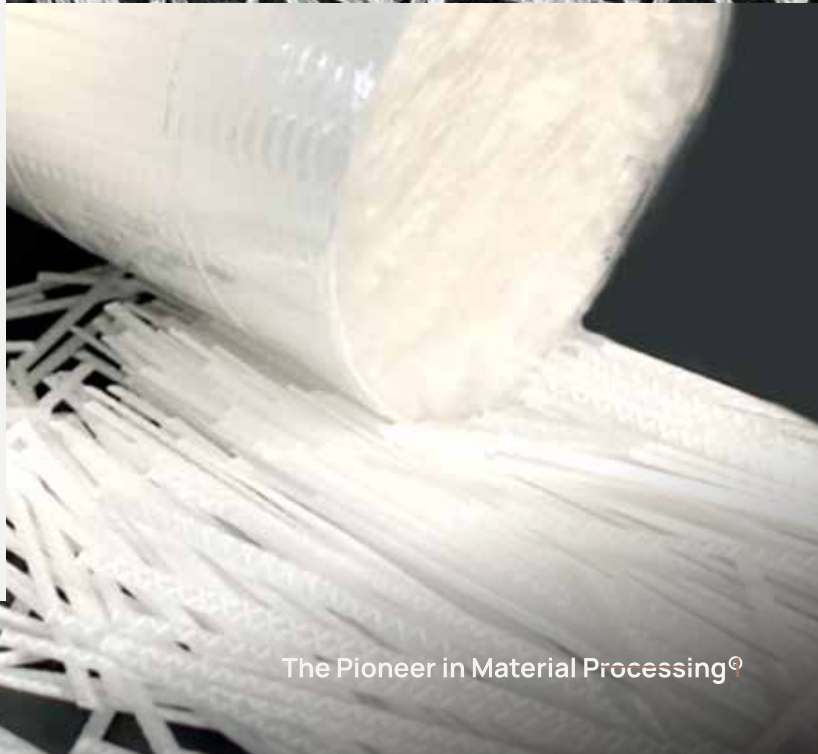
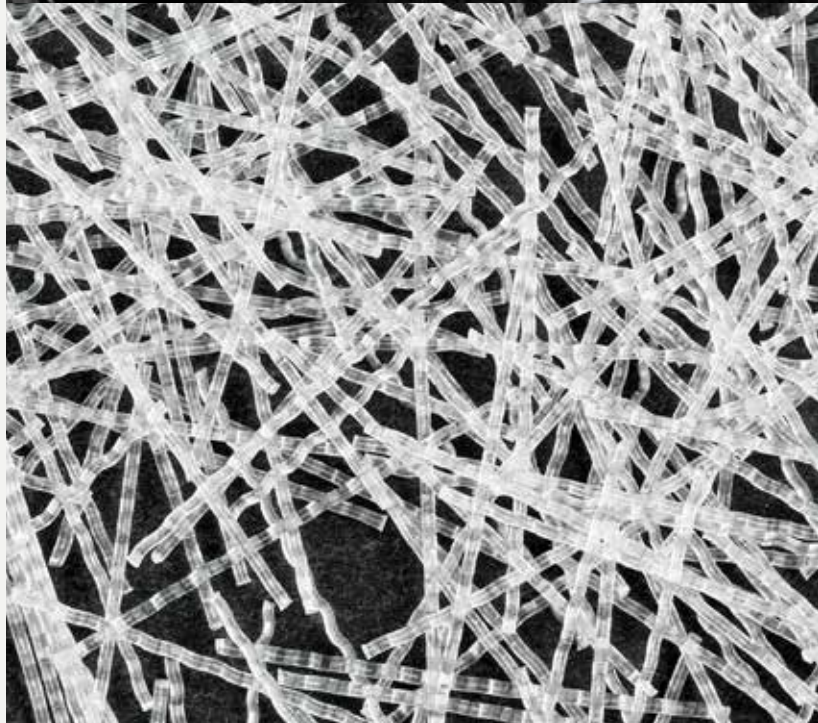


Eirich Fiber Feeder

Optimum separation and precise
feeding of synthetic microfibers
and macrofibers



EIRICH



The Pioneer in Material Processing®

Fully automated: Simple and precise feeding of fibers

Synthetic fibers play an important role in boosting product quality in many modern products. However, the use of fibers in the production process is highly complex, and in the past, automated feeding systems were rarely available.

In the form of the new FD series, Eirich has now elevated fiber feeding to a new level to offer you an automated and practical solution for your process.

This new series enables accurate feeding thanks to optimized solubilization of a wide range of different fiber types.



Suitable for the processing of

- synthetic fibers
- glass fibers
- natural fibers

with fiber lengths ranging from 6 to 50 mm. *

We are also happy to test other lengths for you.

*0.25 to 2 inches

Mode of operation

The units in the FD series can be individually fed, and special attention has been paid to ergonomic considerations for manual feeding. From the generously dimensioned storage tank, the fibers are separated by the special Eirich feeding unit and fed into the process via the discharge unit. High-precision integrated load cells ensure accurate feeding.



A complete solution from Eirich

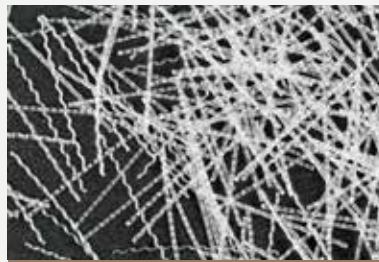
FD series



Microfibers



Macrofibers



Pucks



Eirich-Mixer

Applications



Building materials



Brake and clutch linings



Batteries



Ceramic and refractory products

Advantages

- **Ease of planning**

The feed can be introduced directly into the mixer, onto a conveyor, or into a tub or a balance.

- **Perfectly tailored to your fibers**

The feeding and discharge units are specially optimized for the requirements of your fiber type.

- **Gentle separation process**

With no damage to the fibers.

- **Advantages for your process**

Highest feeding accuracy combined with fast fiber discharge.

- **Robust design and construction**

Excellent service life and high availability.



Da steh' ich drauf.

Hermann Uhl KG

Am Kieswek 1-3

77746 Schutterwald

Germany

Testimonials

“There are a number of methods for feeding fibers, but I was immediately drawn to the one used by Eirich. Straight away, it was obvious to me that this machine was the right one for our process.

We agreed a appointment at Eirich's technical center to test the feeding system and its accuracy on-site using the fibers we will be using in the actual process.

I can wholeheartedly recommend Eirich - we are extremely happy with how reliably the system is running. Our thanks go to the team from Eirich.”



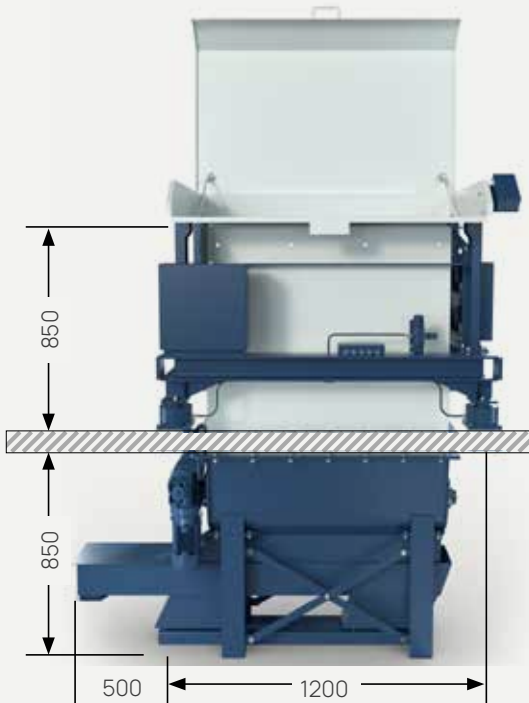
Control system with Quick Set-Up

Seamless integration in your system/plant:

- As a standalone device with a standardized interface to your process control system
or
- Fully-integrated in your process control system



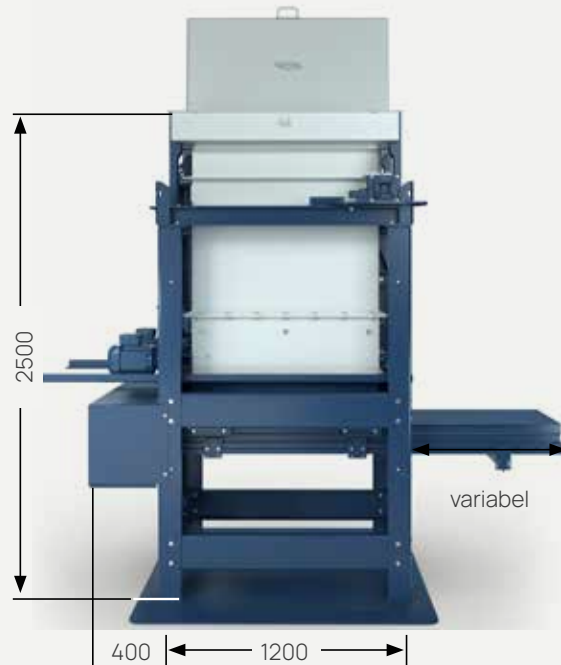
Technical data for your planning



Platform installation

Width: 950

Free-standing



Width: 950

Units in the FD series can be integrated in the system platform or set up as a free-standing installation.

	Weighing capability (kg)	Tank volume (L)	Drives (kW)
FD series	150	500	0.75 - 2.5

Example photos:

Eirich-Fiber feeder for synthetic microfibers





The Eirich Group, with the Gustav Eirich machine factory as a strategic center in Hardheim, is a supplier of machines, systems and services for mixing technology, granulating/pelleting, drying and fine grinding. Our core competencies are procedures and processes for the treatment of loose materials, sludge and mud. We are a family-run company with 16 locations worldwide.

More information at:
www.eirich.com